

Comprehensive Business Intelligence
Across the Service Line



Many cancer executives can accomplish robust service line management tracking and monitoring by establishing a cadence of 6 reports from their decision support/BI teams and using these powerful data sets to identify and drive quality and performance improvement in a range of areas.

Market Sizing

- Service Area
- Incidence
- Market Estimator
- Pop Inc
- Market Utilization
- Market Breakdown

New Cancer Cases

- Map
- Market Share
- Market Share Trends
- Disease Site
- Class of Case
- Patient Origin

Volume

- Inpatient
- State IP
- Outpatient
- Inpatient Surgery
- State IP Market Share
- State IP Service Area
- State IP Tumor Group

Med Onc

- Rad Onc
- Courses
- Captured
- Outmigration
- Courses by Disease
- Volumes by Modality
- Volumes by Provider
- Volumes by Referring

Financials

- Virtual Budget
- Scenarios
- Inpatient Financials
- OP Financials
- Tumor Site Financials
- IP Revenue - PCP
- OP Revenue - PCP
- OP Cancer Revenue
- Cancer Payments - Attending
- MCR Payments - RO Tech

Benchmarks

- CMS Part B
- Ad Hoc
- OMO IQ
- Inpatient Benchmarks
- Key Performance Indicators



WHAT
STANDARDIZED
REPORTS
ARE NEEDED
TO MONITOR
PERFORMANCE?

- TUMOR REGISTRY**
Analytic case counts, class of case mix, disease mix, staging and patient origin
- MEDICAL AND SURGICAL INPATIENTS**
Medical and surgical IPs defined by 1° and 2° ICD-10 codes
- INPATIENT STATE DATA**
State IP database medical and surgical IPs defined by 1° and 2° ICD-10 codes
- ONCOLOGY-RELATED OUTPATIENTS**
OP ancillary encounters defined by 1° and 2° ICD-10 codes
- ONCOLOGY-RELATED OUTPATIENTS**
Charge level detail by CPT/HCPCS code
- RADIATION ONCOLOGY AND INFUSION CLINIC**
Payer mix and collections, profit/(loss) statement and staffing and assets

Creating Your Cancer Program Dashboard: *Example 1*



Service Area

Population 0.2% growth

Year	2019	2020	2021
2019	20.0K	17.8K	14.1K
2020	20.1K	18.0K	14.2K
2021	20.2K	18.1K	14.3K

Cancer Incidence 1.4% growth

Year	2019	2020	2021
2019	44	104	252
2020	45	112	264
2021	46	120	276

Class of Case 2018 89% retention

Year	2015	2016	2017	2018	2019
2015	14%	24%	26%	19%	31%
2016	14%	24%	26%	19%	31%
2017	14%	24%	26%	19%	31%
2018	14%	24%	26%	19%	31%
2019	14%	24%	26%	19%	31%

Analytic Case Patient Origin

Year	2015	2016	2017	2018
2015	495	544	461	420
2016	495	544	461	420
2017	495	544	461	420
2018	495	544	461	420

Analytic Cases 15.3% decline

Year	2015	2016	2017	2018
2015	472	507	423	400
2016	472	507	423	400
2017	472	507	423	400
2018	472	507	423	400

Market Share 19.5% decline

Year	2015	2016	2017	2018
2015	18%	17%	16%	15%
2016	18%	17%	16%	15%
2017	18%	17%	16%	15%
2018	18%	17%	16%	15%

Key Performance Indicators

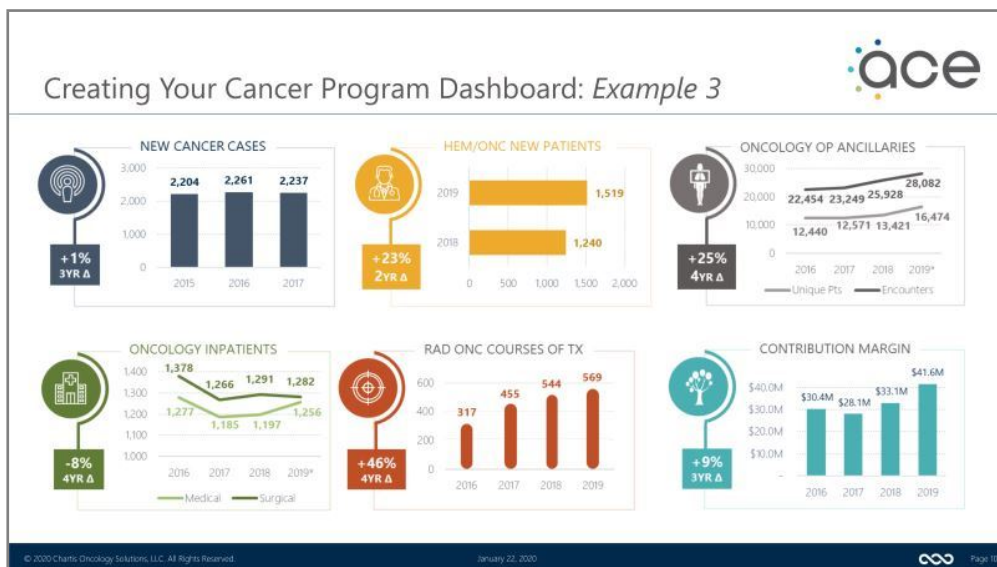
Caseloads	2015	2016	2017	2018	4-Yr. Δ
IP Surgical	581	572	655	658	+13%
Medical	137	132	109	136	-1%
Med Onc New Pts	889	911	838	830	-7%
RT Courses of Tx	234	201	237	232	-1%
OP Ancillaries	11,767	11,269	12,309	15,222	+29%

PSA Surgical Oncology Out-Migration 70+%

Predominantly to AMCs and NCI Centers

Contribution Margin

Year	2015	2016	2017	2018
2015	\$15.8M	\$21.3M	\$26.3M	\$22.0M
2016	\$15.8M	\$21.3M	\$26.3M	\$22.0M
2017	\$15.8M	\$21.3M	\$26.3M	\$22.0M
2018	\$15.8M	\$21.3M	\$26.3M	\$22.0M



Creating Your Cancer Program Dashboard: Example 4

Inpatient surgical services trends are declining for the most recent three years, with medical and radiation oncology driving contribution margin growth.

	New Cancer Cases (15-17)	IP Oncology Admissions		OP Encounters		Medical Oncology	Radiation Therapy	Contribution Margin
	New Cancer Cases	Medical	Surgical	Encounters	Unique Patients	New Patients	Courses of Tx	\$-- Contribution Margin (\$-- per NCC)
CY 2015 / FY 2016	1,896	--	--	--	--	--	--	\$--
CY 2016 / FY 2017	1,961	551	954	49,816	13,170	2,775	593	\$32.7M Contribution Margin (\$16.7K per NCC)
CY 2017 / FY 2018	1,904	635	926	49,214	13,440	2,798	641	\$36.7M Contribution Margin (\$19.9K per NCC)
FY 2019	--	679	862	54,594	14,061	3,192	716	\$38.6M Contribution Margin
3 / 4 YR Δ	+0.4% New Cancer Cases	+23.2% Medical Admissions	-9.6% Surgical Admissions	+9.6% Encounters	+6.8% Unique Patients	+15.0% New Patients	+20.7% Courses of Tx	+18% Contribution Margin

Data Source: Tumor Registry, Hospital provided inpatient and Outpatient data | *New Cancer Cases reflect CY 2015-2018. CY2018 data not available at the time of reporting | † No Medical Oncology patients prior to February 2017. ©2019 Data Annualized | OP encounters represent unique accounts billed, excluding Medical Oncology and Radiation Therapy.

© 2020 Charis Oncology Solutions, LLC. All Rights Reserved. January 22, 2020. Page 11

